

# 8100 SA 12 HF Zyklop Metal Ratchet Set with switch lever, 1/4" drive, metric, 13 pieces

The Zyklop Metal Ratchet Switch, 1/4"



**EAN:** 4013288190987

**Part number:** 05003756001

**Article number:** 8100 SA 12 HF

**Size:** 196x93x48 mm

**Weight:** 557 g

**Country of origin:** CZ

**Customs tariff number:** 82041100

- 13-piece ratchet set in robust textile box
- Extremely slim ratchet with long lever
- Sockets with holding function for screws/bolts/nuts
- With Take it easy tool finder: colour coding by size
- Suitable for docking with the Wera 2go system

Incredibly compact set arrangement with many tools in a minimum of space. A completely new ratchet set feeling thanks to the unique textile boxes that are very robust and durable. They can be positioned upright for tidy storage on the workshop shelf. Additional surface protection due to textile outer material. Low weight and volume for simpler mobility. Take it easy Tool Finder with colour coding according to sizes.



## Web link

[https://products.wera.de/en/ratchets\\_and\\_accessories\\_the\\_zyklop\\_ratchets\\_the\\_zyklop\\_ratchets\\_1\\_4\\_the\\_zyklop\\_metal\\_ratchet\\_switch\\_1\\_4\\_8100\\_sa\\_12\\_hf.html](https://products.wera.de/en/ratchets_and_accessories_the_zyklop_ratchets_the_zyklop_ratchets_1_4_the_zyklop_metal_ratchet_switch_1_4_8100_sa_12_hf.html)

Wera - 8100 SA 12 HF  
05003756001 - 4013288190987

Wera Werkzeuge GmbH  
Korzerter Straße 21-25  
D-42349 Wuppertal  
Tel: +49 (0)2 02 / 40 45-0  
E-Mail: [info@wera.de](mailto:info@wera.de)

## 8100 SA 12 HF Zyklop Metal Ratchet Set with switch lever, 1/4" drive, metric, 13 pieces

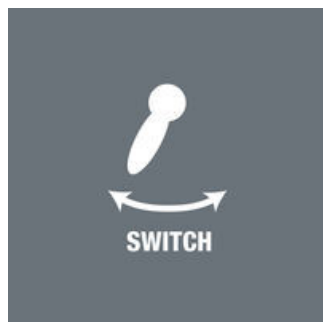
### The Zyklop Metal Ratchet Switch, 1/4"



#### Zyklop Metal Switch



Due to the ever-more confined working environment, space is becoming more and more an issue for the application of ratchets. Our product developers therefore intensively occupied themselves with the issue of confined working spaces, and Wera has now solved this problem. The extremely slim and robust Zyklop Metal ratchet with a long lever was what emerged. When the socket must not get lost and a coincidental change of direction has to be avoided at all cost, the Zyklop Metal Push is the correct choice.



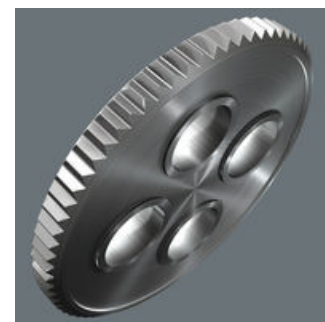
Due to the ever-more confined working environment, space is becoming more and more an issue for the application of ratchets. Our product developers therefore intensively occupied themselves with the issue of confined working spaces, and Wera has now solved this problem. The extremely slim and robust Zyklop Metal ratchet with a long lever was what emerged. When the change in direction needs to be quick, the Zyklop Metal Switch ratchet is the right tool. When the socket must not get lost and a coincidental change of direction has to be avoided at all cost, the Zyklop Metal Push is the correct choice.

#### Reversible



Switch lever for convenient change of direction.

#### Small return angle



Fine-pitched with 72 teeth for a return angle of only 5°

#### Web link

[https://products.wera.de/en/ratchets\\_and\\_accessories\\_the\\_zyklop\\_ratchets\\_the\\_zyklop\\_ratchets\\_1\\_4\\_the\\_zyklop\\_metal\\_ratchet\\_switch\\_1\\_4\\_8100\\_sa\\_12\\_hf.html](https://products.wera.de/en/ratchets_and_accessories_the_zyklop_ratchets_the_zyklop_ratchets_1_4_the_zyklop_metal_ratchet_switch_1_4_8100_sa_12_hf.html)

Wera - 8100 SA 12 HF  
05003756001 - 4013288190987

Wera Werkzeuge GmbH  
Korzerter Straße 21-25  
D-42349 Wuppertal  
Tel: +49 (0)2 02 / 40 45-0  
E-Mail: [info@wera.de](mailto:info@wera.de)

## 8100 SA 12 HF Zyklop Metal Ratchet Set with switch lever, 1/4" drive, metric, 13 pieces

### The Zyklop Metal Ratchet Switch, 1/4"

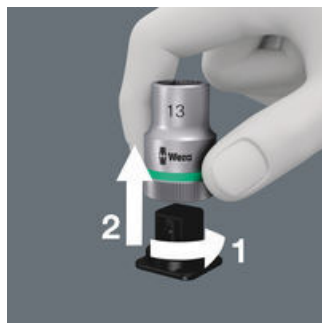


Sockets with retaining function for hexagon headed bolts, screws and nuts



The clamping of the screw is achieved by a twin spring loaded ball retention system. The tubing is effectively protected against mechanical wear and tear by a steel ring. The holding function is especially helpful in confined, hard-to-reach spaces, where there is no room for a second hand to secure the screw.

Secure hold and easy removal



The all new smooth turning mechanism guarantees both secure and rattle-free storage, yet allows easy removal of the tool.

Take it easy tool finder system



Take it easy tool finder system - with profile and size colour-coding for quick and easy tool selection. Colour-coded system for hexagon drive screws (L-Keys, Zyklop bit sockets), external hex drive screws and nuts (Joker wrenches, Zyklop sockets and Zyklop bit sockets with holding function), and TORX® drive screws (L-Keys, Zyklop bit sockets).

The Zyklop Ratchet Metal Switch



Extremely slim. Long leverage. With switch lever.

#### Web link

[https://products.wera.de/en/ratchets\\_and\\_accessories\\_the\\_zyklop\\_ratchets\\_the\\_zyklop\\_ratchets\\_1\\_4\\_the\\_zyklop\\_metal\\_ratchet\\_switch\\_1\\_4\\_8100\\_sa\\_12\\_hf.html](https://products.wera.de/en/ratchets_and_accessories_the_zyklop_ratchets_the_zyklop_ratchets_1_4_the_zyklop_metal_ratchet_switch_1_4_8100_sa_12_hf.html)

Wera - 8100 SA 12 HF  
05003756001 - 4013288190987

Wera Werkzeuge GmbH  
Korzerter Straße 21-25  
D-42349 Wuppertal  
Tel: +49 (0)2 02 / 40 45-0  
E-Mail: [info@wera.de](mailto:info@wera.de)

## 8100 SA 12 HF Zyklop Metal Ratchet Set with switch lever, 1/4" drive, metric, 13 pieces

### The Zyklop Metal Ratchet Switch, 1/4"



#### Set contents:

##### 8004 A Zyklop Metal Ratchet with switch lever and 1/4" drive, 1/4" x 141 mm



05004004001

1x 1/4" x 141 mm



##### 8794 LA Zyklop extension with free-turning sleeve, long, 1/4", 1/4" x 150 mm



05003526001

1x 1/4" x 150 mm



##### 8794 A Zyklop wobble extension, 1/4", 1/4" x 56 mm



05003527001

1x 1/4" x 56 mm



##### 8790 HMA HF Zyklop socket with 1/4" drive with holding function, 5 x 23 mm



05003719001

1x 5 x 23 mm

05003720001

1x 5.5 x 23 mm

05003721001

1x 6 x 23 mm

05003722001

1x 7 x 23 mm

05003723001

1x 8 x 23 mm

05003725001

1x 10 x 23 mm

05003726001

1x 11 x 23 mm

05003727001

1x 12 x 23 mm

05003728001

1x 13 x 23 mm

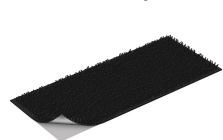
##### Nut Extractor, 43 x 14 mm



05050005001

1x 43 x 14 mm

##### Hook and Loop Fastener Strip 120, 120 x 50 mm



1x 120 x 50 mm

#### Web link

[https://products.wera.de/en/ratchets\\_and\\_accessories\\_the\\_zyklop\\_ratchets\\_the\\_zyklop\\_ratchets\\_1\\_4\\_the\\_zyklop\\_metal\\_ratchet\\_switch\\_1\\_4\\_8100\\_sa\\_12\\_hf.html](https://products.wera.de/en/ratchets_and_accessories_the_zyklop_ratchets_the_zyklop_ratchets_1_4_the_zyklop_metal_ratchet_switch_1_4_8100_sa_12_hf.html)

Wera - 8100 SA 12 HF  
05003756001 - 4013288190987

Wera Werkzeuge GmbH  
Korzerter Straße 21-25  
D-42349 Wuppertal  
Tel: +49 (0)2 02 / 40 45-0  
E-Mail: [info@wera.de](mailto:info@wera.de)