

EXTENSION SHAFT FOR MC4



MC391234

SCHRACK INFO

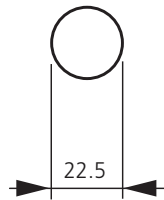
- For maximum cabinet depths of 400 or 600 mm
- Can be cut to required length

DESCRIPTION	CABINET DEPTH	TYPE	ORDER NO.
Extension shaft for MC4	max. 400 mm	MC3/4-XV4	MC391234
Extension shaft for MC4	max. 600 mm	MC3/4-XV6	MC390193

TUNNEL TERMINAL FOR MC4



MC496836



SCHRACK INFO

- Installed external to switch housing
- Contains parts for one switch side located at top or bottom for 3 pole switches
- Comes with terminal for control circuit cabling as standard for copper conductors, 1 x 0,75 – 2,5 mm², or 2 x 0,75 – 1,5 mm²
- Terminal capacities:
Cu/Al cable 1 x 50 – 240 mm², 4 x 50 – 240 mm²
- Terminal cover MC4(-4)-XKSA included

TECHNICAL DATA

- For Cu- and Al cables, max. 1400A
- Terminal cover included
- Stranded round conductor / stranded sector-shaped conductor

DESCRIPTION	TYPE	ORDER NO.
Tunnel terminal 4 x 240 mm ² , 3-pole for MC4	MC4-XKA	MC496836
Tunnel terminal 4 x 240 mm ² , 4-pole for MC4	MC4-4-XKA	MC496837