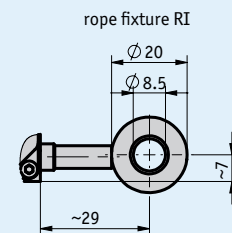
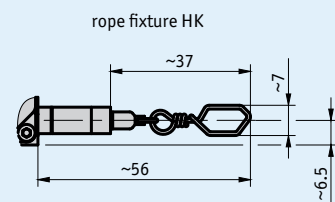
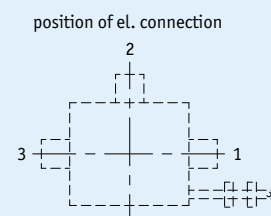
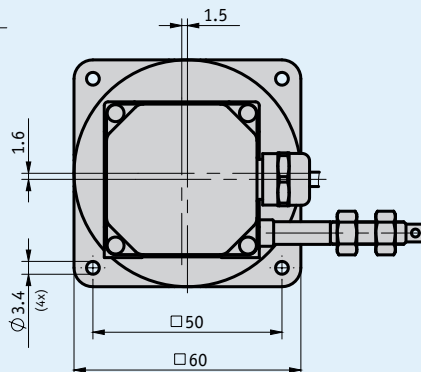
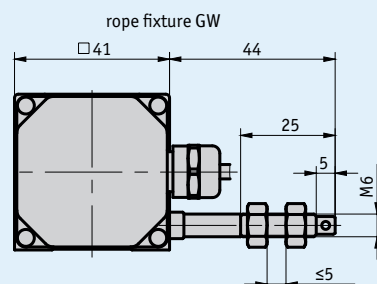
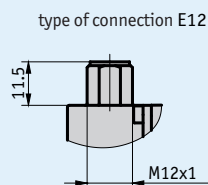
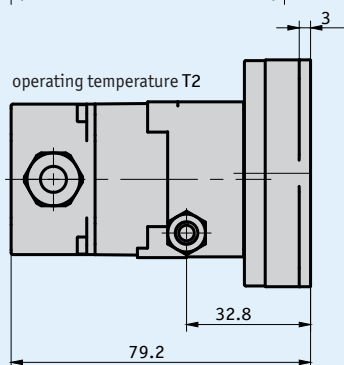
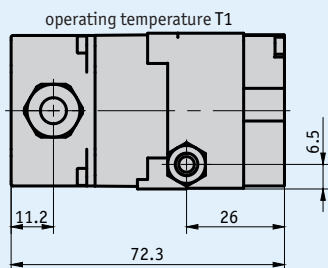
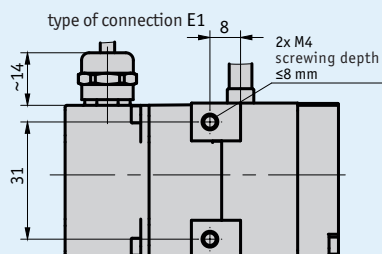
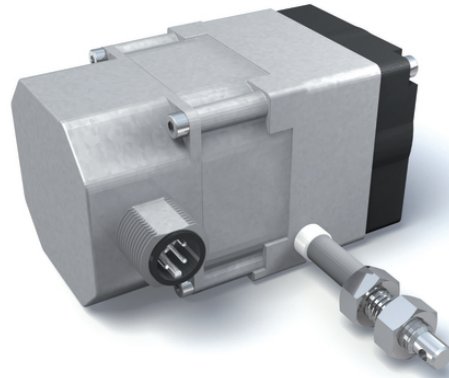


## Profile

- Compact design
- Universally applicable thanks to standardized interfaces
- Easy mounting
- Measurement lengths up to max. 2000 mm
- Potentiometer, voltage or power output
- Robust zinc die-cast housing



### Mechanical data

Feature	Technical data	Additional information
Housing	zinc die-cast	
Wire design	ø0.45 mm	rustproof stainless steel, plastic-coated
Extension force	≥2 N	T1 operating temperature
	≥11 N	T2 working temperature
Measured distance/ rope drum revolution	100 mm	
Absolute accuracy	±0.35 %	relating to measuring length (mm)
Cable length	≤20 m	connection type E1
Weight	~0.32 kg	

### Electrical data

#### Encoder potentiometer

Feature	Technical data	Additional information
Power rating	2 W at 70 °C	
Resistance	10 kΩ	
Resistance tolerance	±5 %	
Linearity tolerance	±0.25 %	

#### Transducer, power output

Feature	Technical data	Additional information
Operating voltage	10 ... 30 V DC	between I+ and I-, at ≤500 Ω load
Output current	4 ... 20 mA	(4/20mA; MWIHP)

#### Transducer, voltage output

Feature	Technical data	Additional information
Operating voltage	15 ... 28 V DC	at 3 mA without load (0/10V)
	8 ... 28 V DC	at 3 mA without load (0,5/4,5V)
Output voltage	0 ... 10 V DC	I <sub>load</sub> ≤10 mA
	0.5 ... 4.5 V DC	I <sub>Last</sub> ≤10 mA (0,5/4,5V)
Resistance	2 ... 10 kΩ	against GND
Load	≤15 mA	

### System data

Feature	Technical data	Additional information
Repeat accuracy	±0.15 mm	
Travel speed	≤1 m/s	

### Ambient conditions

Feature	Technical data	Additional information
Ambient temperature	-10 ... 80 °C	T1
	-40 ... 80 °C	T2
Protection category	IP65 (encoder part)	EN 60529

## Pin assignment

### ■ Potentiometric outputs P10

Signal	E1	E12
Po	brown	1
Pe	white	2
S	green	3
nc		4

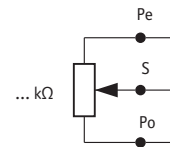
### ■ MWI transducer

Signal	E1	E12
I+	brown	1
I-	white	2
nc		3
nc		4

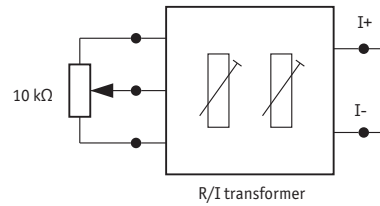
### ■ MWU transducer

Signal	E1	E12
+24 V DC	brown	1
GND	white	2
U <sub>out</sub>	green	3
nc		4

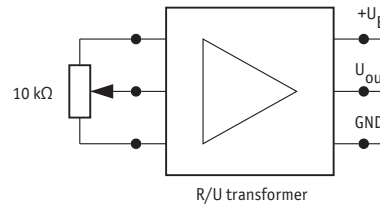
potentiometric outputs P01, P05, P10



transducer MWI

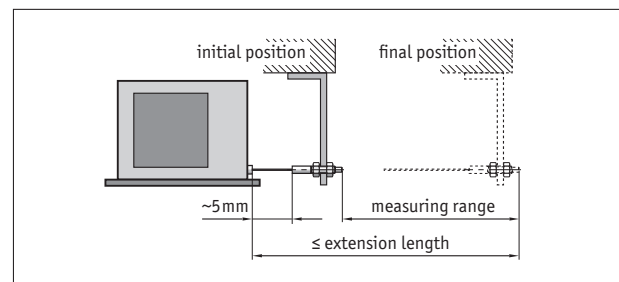


transducer MWU



## Hint for mounting

When securing the wire it must be ensured that the wire is straight and vertical in relation to the wire outlet.  
Recommendation: Only select the starting position after an unwound length of approx. 5 mm. This prevents the wire hitting the end stop when it is rewound.



symbolic depiction

## Order

### Ordering table

Feature	Ordering data	Specification	Additional information
Measuring range	... <b>A</b>	1250, 1500, 1750, 2000 in mm	
Rope fixture	<b>GW</b> <b>B</b> <b>HK</b> <b>RI</b>	wire suspension with thread wire suspension with hook wire suspension with ring	
Encoder type	<b>P10</b> <b>C</b> <b>0.5/4.5V</b> <b>0/10V</b> <b>4/20mA</b>	potentiometer with 10 kΩ measuring transducer 0.5 ... 4.5 V measuring transducer 0 ... 10 V measuring transducer 4 ... 20 mA others on request	
Position of electrical connection	<b>1</b> <b>D</b> <b>2</b> <b>3</b>	direction of wire outlet upward opposite the wire outlet	
Type of connection	<b>E1</b> <b>E</b> <b>E12</b>	open cable ends connector	
Cable length	... <b>F</b> <b>OK</b>	<b>01.0 ... 20.0</b> m, in intervals of 1 m without cable	only with connection type E1 only with connection type E12
Operating temperature	<b>T1</b> <b>G</b> <b>T2</b>	-10 ... +80 °C -40 ... +80 °C	

### Order key

**SG20** -  -  -  -  -  -  -

**A** **B** **C** **D** **E** **F** **G**

**Scope of delivery:** SG20, Mounting instructions

#### Accessories:

Electronic display MA50

Guide roller UR

Wire extension piece SV

Mating Connector Overview

Mating connector, E12, 4-pole, socket

[www.siko-global.com](http://www.siko-global.com)

[www.siko-global.com](http://www.siko-global.com)

[www.siko-global.com](http://www.siko-global.com)

[www.siko-global.com](http://www.siko-global.com)

Order key 83419