

Rotary blade level indicator with plastic housing

RF11

Appliance information

Index	Page
Application Function Electrical connection Technical data	02
Dimensions	03
Application instructions Installation Moisture protection	04
Mounting flange for textile silos Protection from condensation	05

Application (intended use)

The electromechanical level limit switch Typ **RF11** is intended for use as **full, empty and demand detector**.

For level monitoring for simple applications in silos, bunkers, vessels, weighers, etc.

For granulated and grainy bulk materials up to a grain size of:
approx. 50 mm.

Filling level above the measuring blade up to 5,000 mm with bulk densities up to: **1,0 t/m³**.
(For larger bulk heights or bulk weights, please inquire.)

Bulk goods such as:
granules, pellets, flakes, flakes, etc.

Application in many branches of industry such as:
**plastic industry
recycling.**

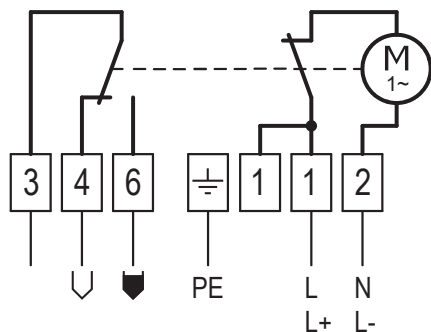
Function

The rotating measuring blade projecting into the vessel is driven by a gearmotor. When the bulk goods heap up to the level of the blade, this prevents the blade from turning and it comes to a standstill. The return torque turns the fitted motor back from its end position and actuates the signal switch by a switching arm.

A second switch turns the motor delayed off. Should the level of the bulk goods drop and the measuring blade can turn freely, a spring brings the motor back into its original end position. At the same time the motor is turned on again and the signal switch is reset.

Elektrical connection

Standard design



005-AP00

Alternative connection option with plug RSFM 5, 4-pin + PE

Sensor plug	M12x1
Housing material	Brass, nickel-plated
Type of protection	IP68 acc. to DIN EN 60529
Wiring	acc. to connection diagram 4-pole+PE
Voltage	up to 24 V DC

Technical data

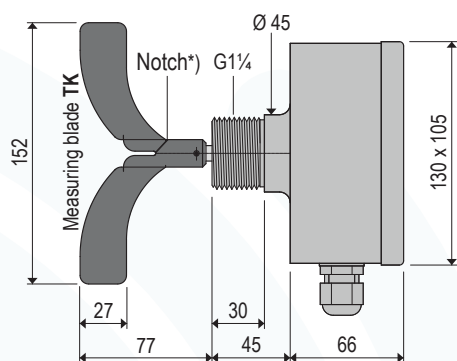
Materials	Housing	ABS, RAL7001
	Shafts	Stainless steel 1.4301 / 304
	Rope	Stainless steel 1.4401 / 316
	Flange F1	GAL
	Measuring blade TK	PP, black
	Measuring blade S1	Stainless steel 1.4301 / 304
	Measuring blade X1/X2/X3	Stainless steel 1.4301 / 304
Bulk goods temperature	Ts	-20 °C ... +80 °C
Ambient temperature	Ta	-20 °C ... +70 °C
Pressure range	p	-0.5 bar ... 1.0 bar
Supply voltage	C1	230 - 240 V AC (50...60Hz)
	C2	110 - 120 V AC (50...60Hz)
	C3	48 V AC (50...60Hz)
	C4	24 V AC (50...60Hz)
	C5	24 V DC
Power consumption		AC = 4 VA DC = 4 W
Signal contact		change-over contact, potential-free
Capacity of the contact		2 A / 250 V AC
Switching voltage		24 V...250 V AC or 12 V...65 V DC
Measuring blade speed		5 U/min
Response delay		approx. 0.75 sec.
Cable entry		gland M20x1,5
Connection clamps		max. 1.5 mm²
Type of protection	IP	IP66 acc. to DIN EN 60529
Weight	Sensor without extension	
	RF11CnG2TK	0.70 kg
	RF11CnG2S1	0.80 kg
	RF11CnF1S1	1.15 kg
	additional extension	
	W1	0.21 kg
	W4	0.50 kg
	W6	1.25 kg
Maintenance		none
Mounting position*	w/o extension	any
	with extension W1	vertical
	with extension W4	vertical
	with extension W6	vertical

*) When used as an empty indicator and for mounting from the outside through a sleeve, we recommend sawing off the plastic wing along the notch on one side.

Subject to change

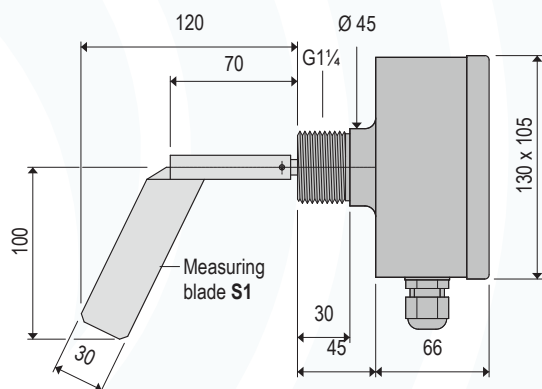
Dimensions

RF11CnG2TK



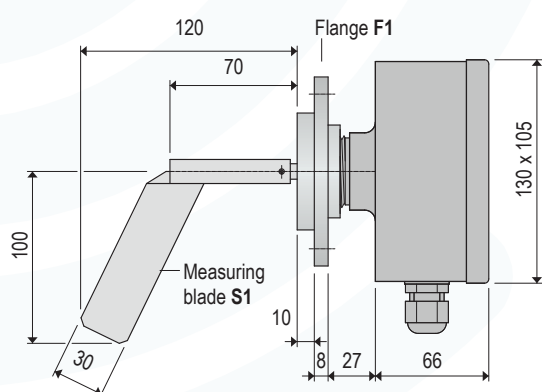
005-0200

RF11CnG2S1



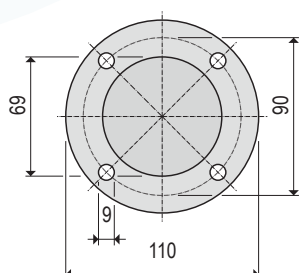
005-0201

RF11CnF1S1



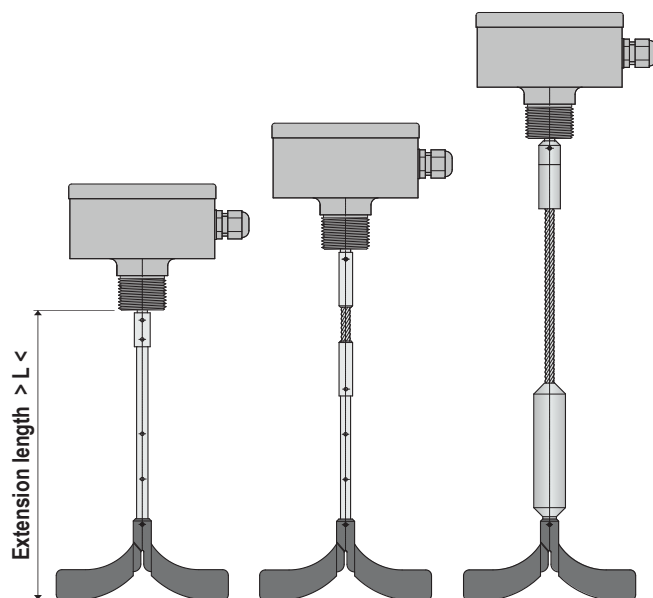
005-0202

Flange F1



001-0212

Jib extensions



W1 Fixed shaft

> L < = 450 mm
with splint hole for
> L < = 350 and
> L < = 250 mm

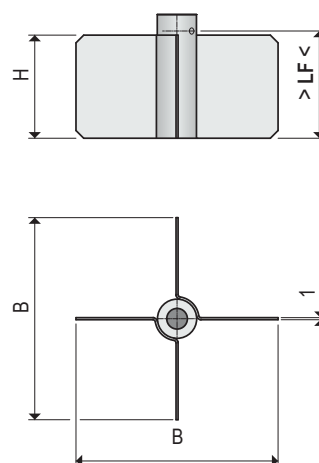
W4 Pendulum shaft

with buckling protection > L < = 1050 mm
with splint hole for
> L < = 850 und
> L < = 650 mm

W6 Rope shaft

> L < = 2000 mm
shorten as needed

X measuring blade



001-0233

	B	H	LF
-X1	98	50	52
-X2	98	100	102
-X3	180	100	102

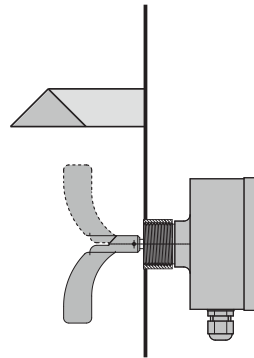
Subject to change

Application instructions

RF11

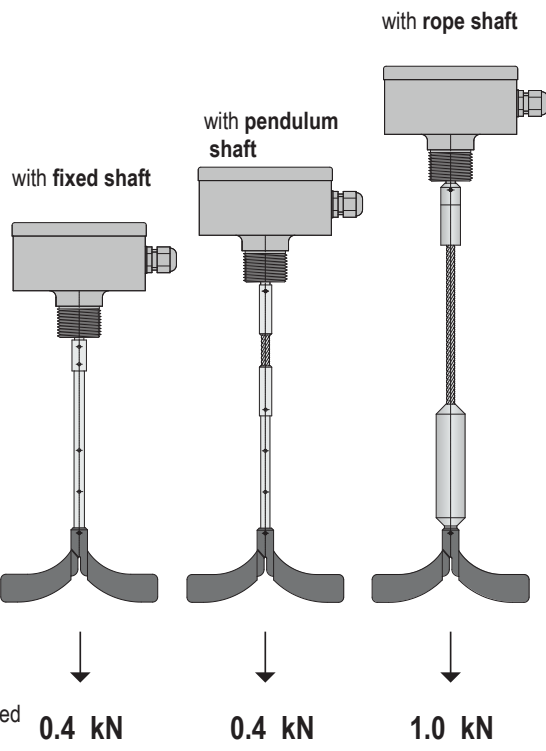
Simple applications
Any installation position

When used as an empty detector, it is recommended to cut off the wing on one side, and if the wing is heavily loaded, the installation of a protective roof is also recommended.



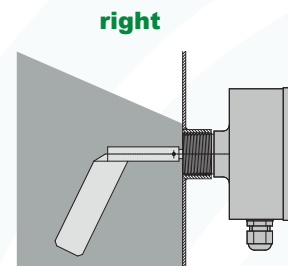
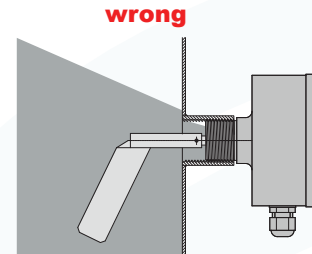
RF11

Jib extension
Vertical installation



Installation

The level indicators are attached to the container with the thread or with the flange.



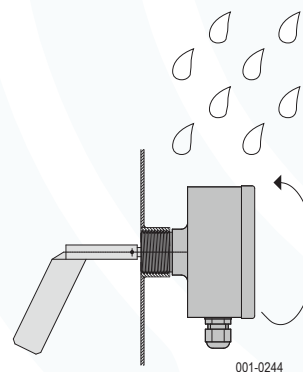
001-0242

The devices should be installed, that no bulk goods can deposit in the thread or flange fittings.

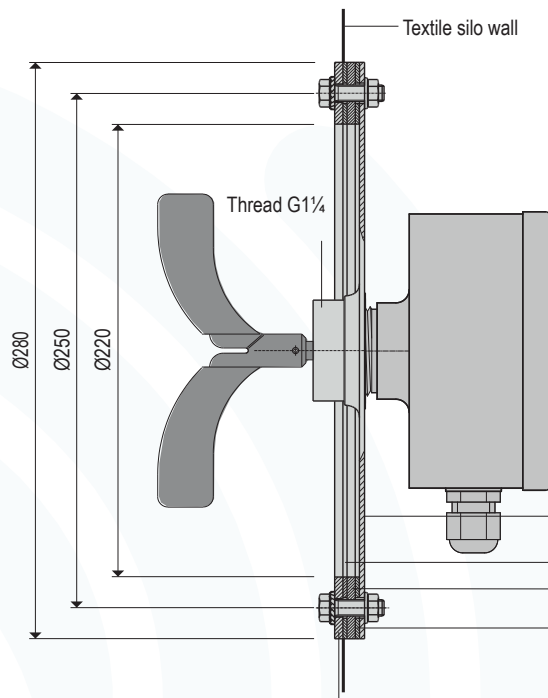
Moisture protection

Mount the device in such a way that the cable gland points vertically downwards.

Advantage: optimal functioning of the device and no infiltration of moisture



Mounting flange for textile silos MG2



Mounting flange for installing level indicators in flexible bag silos.

Large installation port for blades up to 215 mm.

The large area diameter of 280 mm avoids false alarms when the silo walls sag.

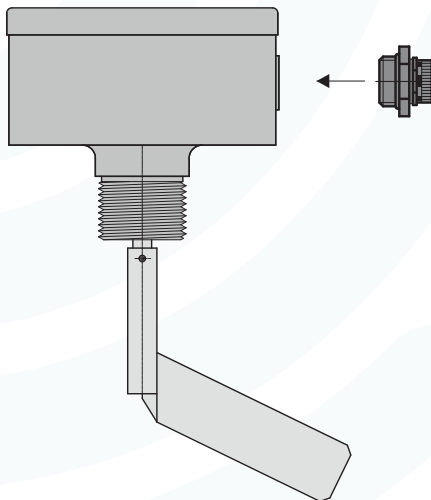
Material	Steel, galvanised
Connection thread	G1 1/4 (G2)
Seal ring	NBR, white FDA

Mounting flange consists of:

- Flange with thread G1 1/4 (G2)
- Seal ring Ø280 mm
- Flange ring with thread for outside
- Seal ring Ø280 mm
- Flange ring with borehole for inside
- Scrwes, nuts and washers

001-0222

Protection from condensation SDK



Condensate protection valve for screwing into a threaded hole. Recommended when using the level indicator outdoors.

A waterproof membrane that is open to vapor diffusion prevents the formation of condensate in the interior of the housing.

Material	Polyamid
Seals	VITON
Connection thread	M20x1,5
Type of protection	IP66

