

EPIC® H-BE 32 Screw termination

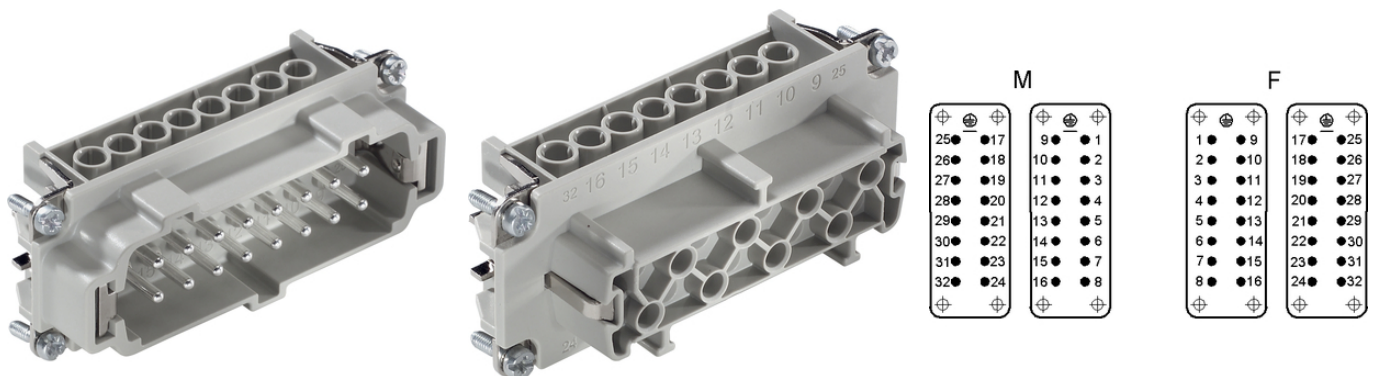
The proven standard inserts for easy assembly

The standard insert with screw termination can be used for higher voltages and currents and is highly reliable.

Info

Proven screw for easy installation

Screw, crimp, cage clamp and Push-In version - freely combinable



Temperature-resistant



Robust



Rail



Mechanical and plant engineering



Kompletterande automationskomponenter från Lapp



Benefits

Standard inserts with screw, crimp cage clamp and Push-In termination

The EPIC® H-BE series is suitable for applications that require a reliable connection when working with high voltages and currents

Railway applications

- Fire protection on railway vehicles: Test according EN 45545-2. Requirement sets R22 and R23. Hazard level HL1, HL2 and HL3

Last Update (18.05.2019)

©2019 Lapp Group - Technical changes reserved

Product Management www.lappkabel.de

You can find the current technical data in the corresponding data sheet.

PN 0456 / 02_03.16

EPIC® H-BE 32 Screw termination

Application range

Mechanical engineering
Plastics industry
Light & sound technology
Railway applications / vehicle construction

Technical Data

Classification ETIM 5:	ETIM 5.0 Class-ID: EC000438 ETIM 5.0 Class-Description: Contact insert for industrial connectors
Classification ETIM 6:	ETIM 6.0 Class-ID: EC000438 ETIM 6.0 Class-Description: Contact insert for industrial connectors
Rated voltage (V):	IEC: 500 VUL: 600 VCSA: 600 V
Rated impulse voltage:	6 kV
Rated current (A):	IEC: 16 A UL: 16 A CSA: 16 A
Pollution degree:	3
Flammability:	UL94 V-0
Contact resistance:	< 2 mOhm
Contacts:	Copper alloy, hard silver-plated
Number of contacts:	32 + PE
Termination methods:	Screw termination: 0.5 - 2.5 mm ²
Stripping length (mm):	8
Material:	PC, polycarbonate
Cycle of mechanical operation:	500
Temperature range:	-40°C to +100°C, short-term up to +125°C

Note

Photographs and graphics are not to scale and do not represent detailed images of the respective products.
Prices are net prices without VAT and surcharges. Sale to business customers only.

EPIC® H-BE 32 Screw termination

Article number	Article description	Contact type	Wire protection	Number of operating contacts	Pieces / PU
10202000	EPIC® H-BE 16 SS 17-32	male	yes	17 - 32	5
10203000	EPIC® H-BE 16 BS 17-32	female	yes	17 - 32	5
10202100	EPIC® H-BE 16 SS 17-32	male	-	17 - 32	5
10203100	EPIC® H-BE 16 BS 17-32	female	-	17 - 32	5

Last Update (18.05.2019)

©2019 Lapp Group - Technical changes reserved

Product Management www.lappkabel.de

You can find the current technical data in the corresponding data sheet.

PN 0456 / 02_03.16