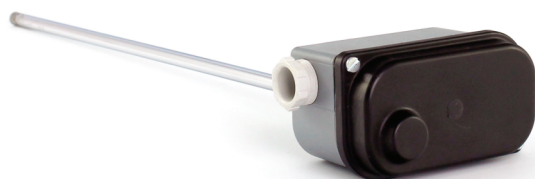


# STEM THERMOSTAT series TH 140

resistant thermostat IP 44  
load up to 15A



## DESCRIPTION:

- temperature sensitive element is the stem of thermostat, consisting of: for TH 140 and TH 143 dilating brass for TH 141 and TH 144 anticorrosive tube
- temperature expansion of the tube is transferred by invar bar through lever gearing onto switching mechanism, which is placed in a waterproof head
  - regulatory button for required temperature setting is also placed in a waterproof head and may be arrested, so that the setting can not be changed by means of vibration, etc.
- for thermostat mounting into the regulated environment use union nut on thermostats stem
  - thermostats TH 140 and TH 141 are designed for direct loading - switching contacts are bypassed by arc-suppression condenser
  - thermostat TH 143 and TH 144 are designed for alternate loading

## TECHNICAL PARAMETERS:

- regulatory range: 20-140°C (TH140,143)  
100-200°C (TH141, 144)
- switching temperature difference: 1-4K (TH140, 143)  
1-6K (TH141,144)
- stem length: 303 (TH141, 144); 350mm (TH140,143)
  - setting accuracy: 10%
- contact load: 60V, 1A ss; 120V, 0,5A ss (TH140, 141)  
250V st, 15A st (TH143,144)
  - protection: IP 44

## SPECIFICATION:

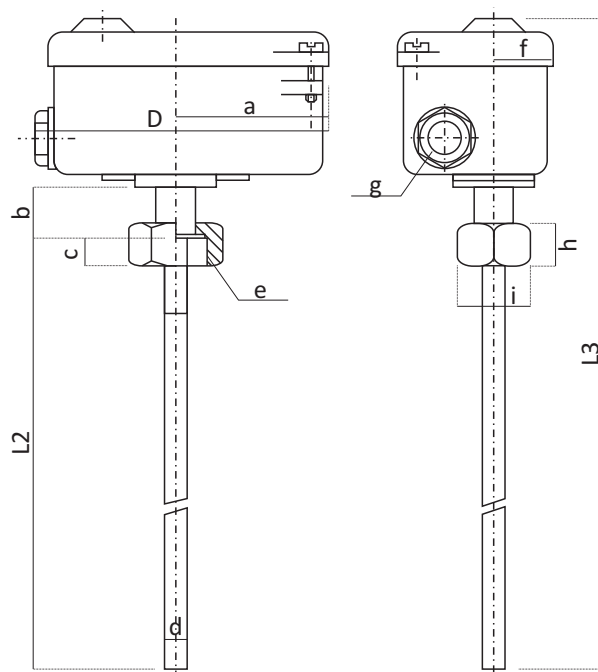
These thermostats are temperature dependent single-pole switches, which are designed for temperature regulation in liquid environment.

Suitable for hot-water heating regulation of thermoplastic and rubber moulding presses, further for regulation and temperature detection of water and oil baths.

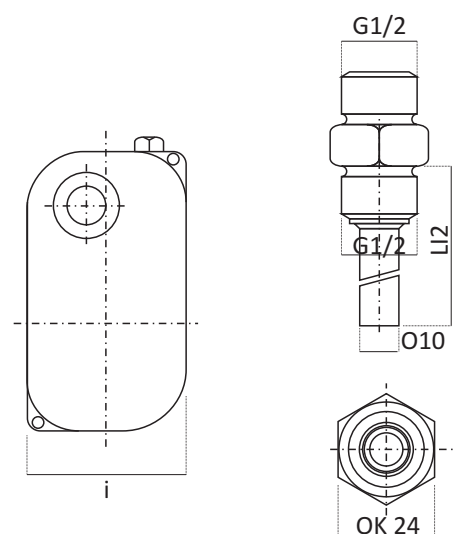
The core of these thermostats is a reliable mechanical system, that has no power consumption itself. For assembly in liquid environment it is necessary to use a protection well. The stem must not be exposed to mechanical stress and must be placed in a way, so that it can freely dilate. Thermostats working position is arbitrary.

| Type                       | TH 140                      | TH 141                      | TH 143       | TH 144       |
|----------------------------|-----------------------------|-----------------------------|--------------|--------------|
| Regulatory range           | 20-140°C                    | 100-200°C                   | 20-140°C     | 100-200°C    |
| Switching temp. difference | 1-4K                        | 1-6K                        | 1-4K         | 1-4K         |
| Setting accuracy           | ±10%                        | ±10%                        | ±10%         | ±10%         |
| Stem length                | 350                         | 303                         | 350          | 303          |
| Contact load               | 60V, 1A ss<br>120V, 0,5A ss | 60V, 1A ss<br>120V, 0,5A ss | 250V, 15A st | 250V, 15A st |
| Weight                     | 0,75kg                      | 0,75kg                      | 0,75kg       | 0,75kg       |

• series TH 140, 141, 143, 144



• thermostat well series TH 140



| Type   | L   | L1  | L2  | L3  |
|--------|-----|-----|-----|-----|
| TH 140 | 337 | 360 | 350 | 440 |
| TH 141 | 287 | 310 | 303 | 393 |
| TH 143 | 337 | 360 | 350 | 440 |
| TH 144 | 287 | 310 | 303 | 393 |

| Dimensions in mm |    |    |   |   |      |    |      |    |      |   |
|------------------|----|----|---|---|------|----|------|----|------|---|
| D                | a  | b  | c | d | e    | f  | g    | h  | i    | j |
| 108              | 56 | 18 | 6 | 8 | G1/2 | 22 | 13,5 | 16 | OK27 | 5 |

Wiring diagram

