



ThermaData® WiFi

Wi-Fi Connected Data Logger

Access Temperature Data Worldwide

Use your existing Wi-Fi network and router.
No gateways or monthly cloud storage fees!

Easy to Read LCD

Big digit LCD screen displays current temperature, Wi-Fi connection status, memory status, remaining battery, & alarm condition.

Choose Your Logger Type

Select from fixed thermistor probes, ambient sensors, or removeable Type K or Type T thermocouples. Ranges from -40 to 2500°F.

NEW! Auto-Archive

Retrieves and archives data automatically from logger.

Built to Last

ThermaData WiFi loggers are rugged, durable, and splash-proof.

API Available for Integration

Can be integrated into existing apps—call for details.

Programmable High & Low Alarms

Email, text, and mobile alerts when alarm limits are exceeded.

Store up to 18,000 Readings on Board

If transmission is interrupted, store up to 9,000 readings per channel on board for later download. Uses 2x AA batteries, 12 months typical.

Store & Display Max & Min Values

Display Max/Min for quick recall. High accuracy to $\pm 0.9^\circ\text{F}$ ($\pm 0.5^\circ\text{C}$).

Hundreds of Optional Probes

Find Type K thermocouple probes for cooking, roasting, cold/hot holding, ovens, prep areas, and more at ThermoWorks.com.



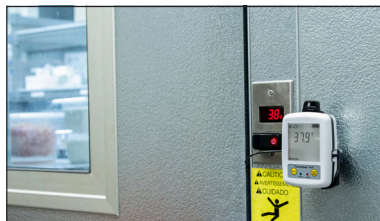
CERTIFICATE OF CALIBRATION

Calibrated by ETI Ltd for:
ThermoWorks Inc.
1762 W. 20 St., Unit 100
London UT 84042

Date of Issue: Tuesday, 08 October
Certificate Issued By: John Doe

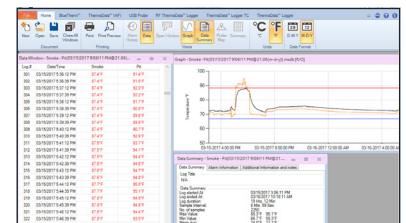
Included Calibration Certificate

Each logger comes with a 2-point NIST-traceable calibration certificate to certify its accuracy.



Fridge/Freezer Monitoring

Use in walk-ins, freezers, cooking areas, prep areas, cold holding, ovens, cook-chill, and much more!



ThermaData Studio Included

Connect up to 40 qualified temperature recording devices to a single software portal, the ThermoData Studio Software Suite. You set up your own dashboard view. Access Wi-Fi data from your desktop anywhere in the world.