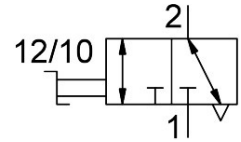



# Shut-off valve HE-3-QS-8

Part number: 153476

**FESTO**



 [General operating condition](#)

## Data sheet

Feature	Value
Valve function	3/2 double solenoid
Selection of additional functions	With exhaust function
Pneumatic connection, port 1	QS-8
Pneumatic connection, port 2	QS-8
Type of actuation	Manual
Type of mounting	Either: Direct mounting via through-hole In-line installation
Standard nominal flow rate (standardised to DIN 1343)	415.8 l/min
Nominal size	3.5 mm
Operating pressure	-0.095 MPa ... 1 MPa
Operating pressure	-0.95 bar ... 10 bar
Ambient temperature	0 °C ... 60 °C
Material housing	PBT-reinforced
Operating medium	Compressed air to ISO 8573-1:2010 [7:-:-]
Exhaust-air function	Without flow control option
Sealing principle	Soft
Mounting position	optional
Design	Piston gate valve
Type of piloting	Direct
Flow direction	Non-reversible
Symbol	00997329
Note on operating and pilot medium	Lubricated operation possible (in which case lubricated operation will always be required)
Corrosion resistance class CRC	2 - Moderate corrosion stress
LABS (PWIS) conformity	VDMA24364-B1/B2-L
Cleanroom class	Class 4 according to ISO 14644-1
Media temperature	0 °C ... 60 °C
Product weight	26 g
Pneumatic connection, port 3	Not ducted
Note on materials	RoHS-compliant
Material seals	NBR