



EAN code

USS-ZM:	8595188124577
USS-00:	8595188124614
USS-01:	8595188124621
USS-02:	8595188124638
USS-03:	8595188124645
USS-04:	8595188124652
USS-05:	8595188124669
USS-06/S:	8595188124676
USS-06/R:	8595188136372
USS-07:	8595188124683
USS-08:	8595188124690
USS-09:	8595188124706
USS-10:	8595188124331
USS-11:	8595188124348
USS-12:	8595188124355
USS-13:	8595188124362
USS-14:	8595188124898
USS-15:	8595188124379

- Independent switch units designed for flexible controlling and switching of power circuits
- USS - "Do It Yourself" = it is possible to "click into" different types of switches and signalling units into the basic module
- Units are delivered as components and configured by the user
- 15 types of units: switches, push buttons, signal lights of different colours including flashing lights units are replaceable also for future (for example when an application is changed, extended, etc...)
- It is possible to place up to two units into one MODULE (for example 2x switch, 2x signalling lights or combinations) = saves space in switchboard panels
- 1-MODULE, DIN rail mounting
- Operating temperature -20 °C to +55 °C (-4 °F to 131 °F)
- M3 screw with clamp terminals

Units

Make your own device USS - easy and intelligent solution!

CONNECTION INDICATION	RATED CURRENT/VOLTAGE (FOR SWITCHES) SUPPLY VOLTAGE (FOR SIGNALLING LIGHTS)	DESCRIPTION
USS-ZM	MODUL	Basic MODULE (housing with terminals and contacts)

USS-00



Blind flange

USS-01



6 A / 250 V AC

Switch

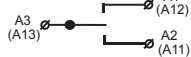
USS-02



8 A / 250 V AC

Alternation switch

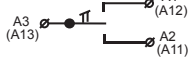
USS-03



6 A / 250 V AC

Switch with central position

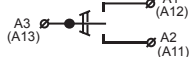
USS-04



6 A / 250 V AC

Switch + button with central position

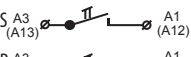
USS-05



6 A / 250 V AC

Switching button with central position

USS-06/S



8 A / 250 V AC

NO switch

USS-06/R



8 A / 250 V AC

NC switch

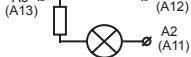
USS-07



10 A / 250 V AC

Switch with glow lamp (red)

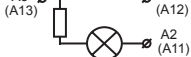
USS-08



10 A / 250 V AC

Switch with glow lamp (green)

USS-09



10 A / 250 V AC

Switch with glow lamp (yellow)

USS-10



A1-A2. AC 250 V

A1-A3, AC/DC 24 V

Signalling LED (red)

USS-11



A1-A2. AC 250 V

A1-A3, AC/DC 24 V

Signalling LED (green)

USS-12



A1-A2. AC 250 V

A1-A3, AC/DC 24 V

Signalling LED (yellow)

USS-13



A1-A2. AC 250 V

A1-A3, AC/DC 24 V

Signalling LED (white)

USS-14



A1-A2. AC 250 V

A1-A3, AC/DC 24 V

Signalling LED flashing (red)

USS-15



A1-A2. AC 250 V

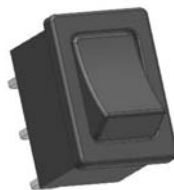
A1-A3, AC/DC 24 V

Signalling LED (blue)



BLIND FLANGE

Used to fill in an empty position in the front panel of the USS Module.
Color: Grey, RAL7035 (the same as the housing).
Unit: 00



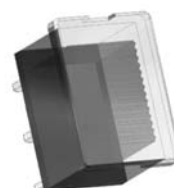
SWITCHES, PUSH BUTTONS

They have a low uplift and a large fingerboard. High quality contacts, easy rock switch and large button area provide years of useful life.
Unit: 01-06



SWITCHES WITH GLOW LAMP

Switch and signalization in one unit. Signalization is carried out by a glow lamp in dolly including series resistance. It is possible to instal it for permanent indication or for an intermittend by contact of the switch.
Colours: red, green, yellow.
Supply voltage of the signalling light: AC 250 V.
Unit: 07-09

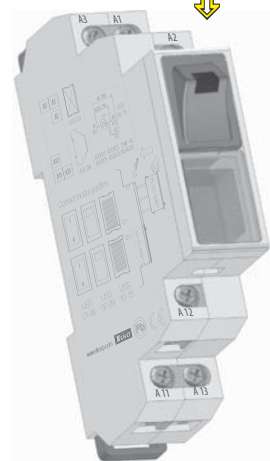


SIGNALLING LIGHT

High luminescence SMD/LED that illuminates the entire button area surface. Input voltage can be either AC 230 V or AC/DC 24 V (output light may vary). Red sig. light is delivered also in a flashing version.
Unit: 14
Colours: red, green, yellow, white, blue
Unit: 10-15

Example of an order:

USS - ZM
+ USS - 07
+ USS - 11



Switching units (01-09) are made by reputable French company - APEM. The quality of switch-buttons is guaranteed by long-term experiences in the field (from 1952) and by world-recognized certificates VDE and UL. Unique switching mechanism ensures long life of switching at constant parameters.

Terminal connection



Laser marking

Switches and buttons are marked by laser according to your request in case you order 50 pcs and more.

Max. number of symbols:



Dimensions

See page 133